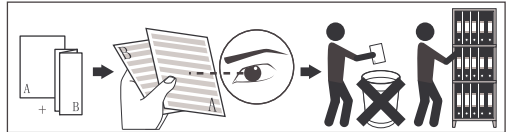
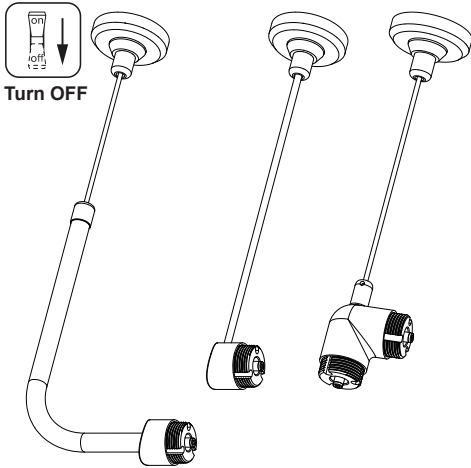


Please read carefully before installing



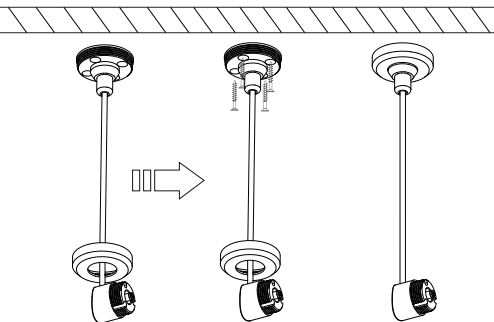
### Installation



Turn OFF

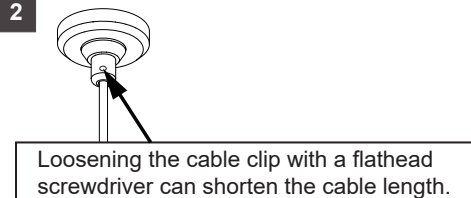
This model is installed and used in the same way.

1

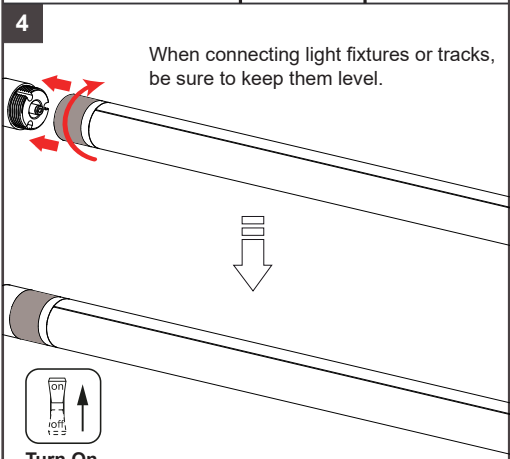
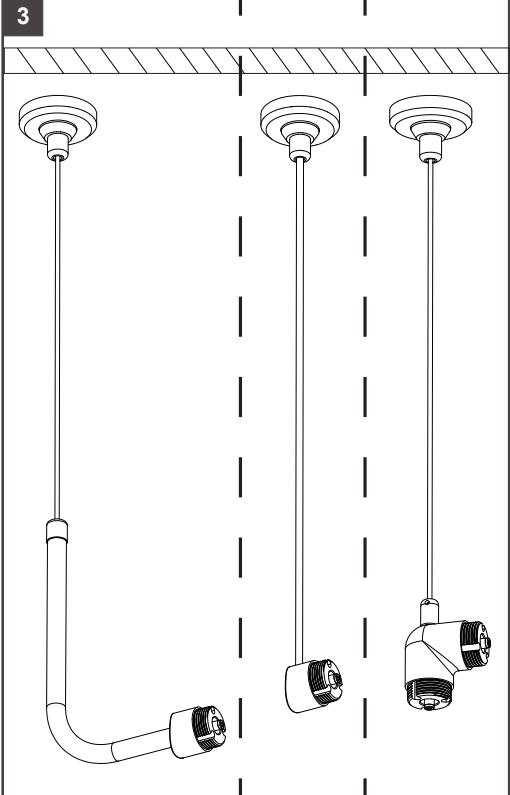


After determining the position, unscrew the cover, secure the base with screws, and then screw the cover back on.

2



Loosening the cable clip with a flathead screwdriver can shorten the cable length.



When connecting light fixtures or tracks, be sure to keep them level.



Turn On